

DIESEL LIGHT TOWER

ALROUF4000 light towers go WHEREVER you need them. These mobile units are offered in a variety of configurations with options to meet every need. The solid trailer design, powder-coated enclosure and wide body design are built to stand up to the harsheet of conditions. That includes remote locations and rugged terrain.

LED LAMP



These vertical mast light towers come standard with an manual winch for easy deployment. Standard analog controls are easy to use and allow for individual light operation. Upgrade to the fully programmable Deepsea controller with auto start/stop and dusk-to-down sensor.

Robust

Versatile

Easy to Use



Robust

- Proven performance in extreme environments
- Durable steel frame and enclosure
- Powerful LED or optional metal halide bulbs

Versatile

- Fully adjustable mast and fixtures
- Transport via tow hitch or fork pockets
- AC 220V output socket for jobsite power needs

Easy to use

- Ground adjustable mast and fixtures - no tools necessary
- Standard UK Deepsea DSE4520 controller for programmable start and stop

APPLICATIONS

- Commercial Construction
- Infrastructure / Roadwork
- Oil and Gas Sites
- Military Operations
- Open Mining
- Base Camps
- Outdoor Events

Quick Drain Fast | Clean | Efficient

A streamlined oil change process:

- Convenient - no need to reach under machines
- Purges & extracts from the sump
- Evacuates the sump directly to final containment via zero leak quick disconnect
- No spills, dripping filters, drain pans or intermediate containers needed
- Completes engine oil and filter change in less than 10 minutes.
- Improve scheduling of assets and reduce downtime.

Note: Customer has to have the hardware to utilize the RPM system.

Standard UK Deepsea DSE45250 Controller

- Large, easy-to-read, backlit color display
- One-touch manual start with individual light controls
- Dusk-to-dawn sensor or 7-day scheduler automatically starts and stops the unit each day
- Programmable service reminders for custom alerts
- Comprehensive warnings protect the operator and equipment
- Telemetry interfacing for remote monitoring

FEATURES

Durable LED Luminations

Mast

ON/OFF Switch for Each Luminaire

Heavy-Duty Steel Enclosure

4-Point Outriggers

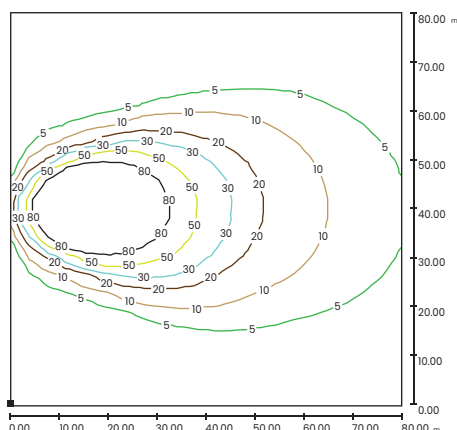
Large Fuel Tank

Convenience Receptacles



SPECIFICATION

DESCRIPTION	ALROUFG4000PLED	ALROUF4000LED
Light	4x350w LED (Equivalent to 4X1000W MH)	4x350w LED (Equivalent to 4X1000W MH)
Fuel / Power Source	Diesel	Diesel
Engine	Perkins	Laidong
Engine Model	403D-11G	KM385BD
Displacement (L)	1.1	1.532
Cylinders	3	3
Mast Type	Vertical	Vertical
Mast Sections	5	5
Mast Height FT (M)	30FT (9M)	30FT (9M)
Standard Winch	MANUAL	MANUAL
Continuous Power (Max KW)	7KW	8KW
Sound Db	68	71
Luminaire Expected Life Span (Hr)	50000	50000
Auto On/off	Optional	Optional
Dust To Dawn Sensor	Optional	Optional
Electrical Outlets	(1) 120V 20A duplex	(1) 120V 20A duplex
	(1) 120/240V 30A	(1) 120/240V 30A
Dimension (MM)	3035*1488*3220	3035*1488*3220
Weight (Kgs)	1250	1280



LED LIGHT TOWER COVERAGE

30 FT (9M) MAST HEIGHT, 4x350W LED FIXTURES@20 DEGREE TILT

UNIT Lux, Proportion 1:626

DIESEL LIGHT TOWER

ALROUF4000 light towers go WHEREVER you need them. These mobile units are offered in a variety of configurations with options to meet every need. The solid trailer design, powder-coated enclosure and wide body design are built to stand up to the harsheet of conditions. That includes remote locations and rugged terrain.

METAL HALIDE LAMP



These vertical mast light towers come standard with an manual winch for easy deployment. Standard analog controls are easy to use and allow for individual light operation. Upgrade to the fully programmable Deepsea controller with auto start/stop and dusk-to-down sensor.

Robust

Versatile

Easy to Use



Robust

- Proven performance in extreme environments
- Durable steel frame and enclosure
- Powerful LED or optional metal halide bulbs

Versatile

- Fully adjustable mast and fixtures
- Transport via tow hitch or fork pockets
- AC 220V output socket for jobsite power needs

Easy to use

- Ground adjustable mast and fixtures - no tools necessary
- Standard UK Deepsea DSE4520 controller for programmable start and stop

APPLICATIONS

- Commercial Construction
- Infrastructure / Roadwork
- Oil and Gas Sites
- Military Operations
- Open Mining
- Base Camps
- Outdoor Events

Quick Drain Fast | Clean | Efficient

A streamlined oil change process:

- Convenient - no need to reach under machines
- Purges & extracts from the sump
- Evacuates the sump directly to final containment via zero leak quick disconnect
- No spills, dripping filters, drain pans or intermediate containers needed
- Completes engine oil and filter change in less than 10 minutes.
- Improve scheduling of assets and reduce downtime.

Note: Customer has to have the hardware to utilize the RPM system.

Standard UK Deepsea DSE45250 Controller

- Large, easy-to-read, backlit color display
- One-touch manual start with individual light controls
- Dusk-to-dawn sensor or 7-day scheduler automatically starts and stops the unit each day
- Programmable service reminders for custom alerts
- Comprehensive warnings protect the operator and equipment
- Telemetry interfacing for remote monitoring

FEATURES

Durable LED Luminations

Mast

ON/OFF Switch for Each Luminaire

Heavy-Duty Steel Enclosure

4-Point Outriggers

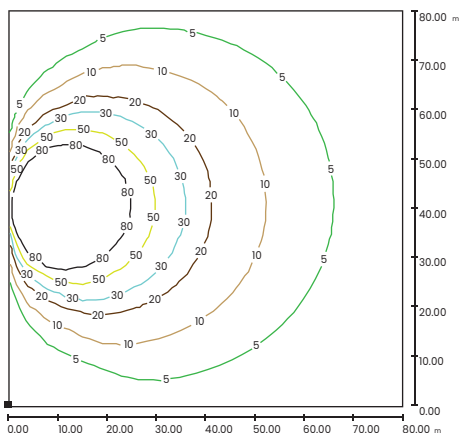
Large Fuel Tank

Convenience Receptacles



SPECIFICATION

DESCRIPTION	ALROUFG4000PMH	ALROUFG4000LMH
Light	4x1000w METAL HALIDE	4x1000w METAL HALIDE
Fuel / Power Source	Diesel	Diesel
Engine	Perkins	Laidong
Engine Model	403D-11G	KM385BD
Displacement (L)	1.1	1.532
Cylinders	3	3
Mast Type	Vertical	Vertical
Mast Sections	5	5
Mast Height FT (M)	30FT (9M)	30FT (9M)
Standard Winch	MANUAL	MANUAL
Continuous Power (Max KW)	7KW	8KW
Sound Db	68	71
Luminaire Expected Life Span (Hr)	1000	1000
Auto On/off	Optional	Optional
Dust To Dawn Sensor	Optional	Optional
Electrical Outlets	(1) 120V 20A duplex (1) 120/240V 30A	(1) 120V 20A duplex (1) 120/240V 30A
Dimension (MM)	3035*1488*3327	3035*1488*3327
Weight (Kgs)	1280	1320



UNIT Lux, Proportion 1:626

METAL HALIDE LIGHT TOWER COVERAGE

30FT (9M) MAST HEIGHT, 4x1000W
METAL HALIDE FIXTURES@20 DEGREE TILT